

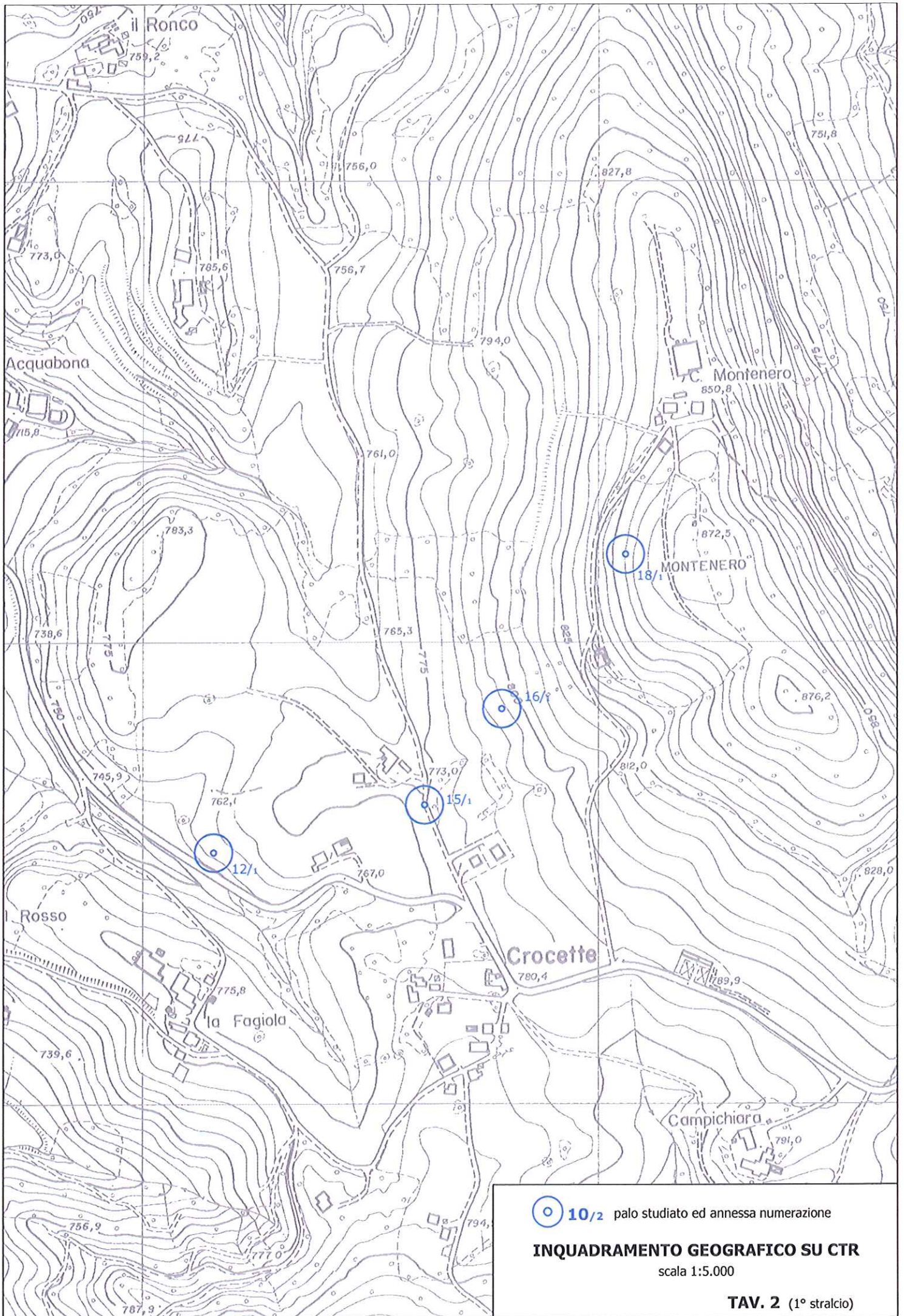
**INQUADRAMENTO COROGRAFICO**


scala 1:25.000

📍 10/2 palo studiato ed annessa numerazione

**TAV. 1**



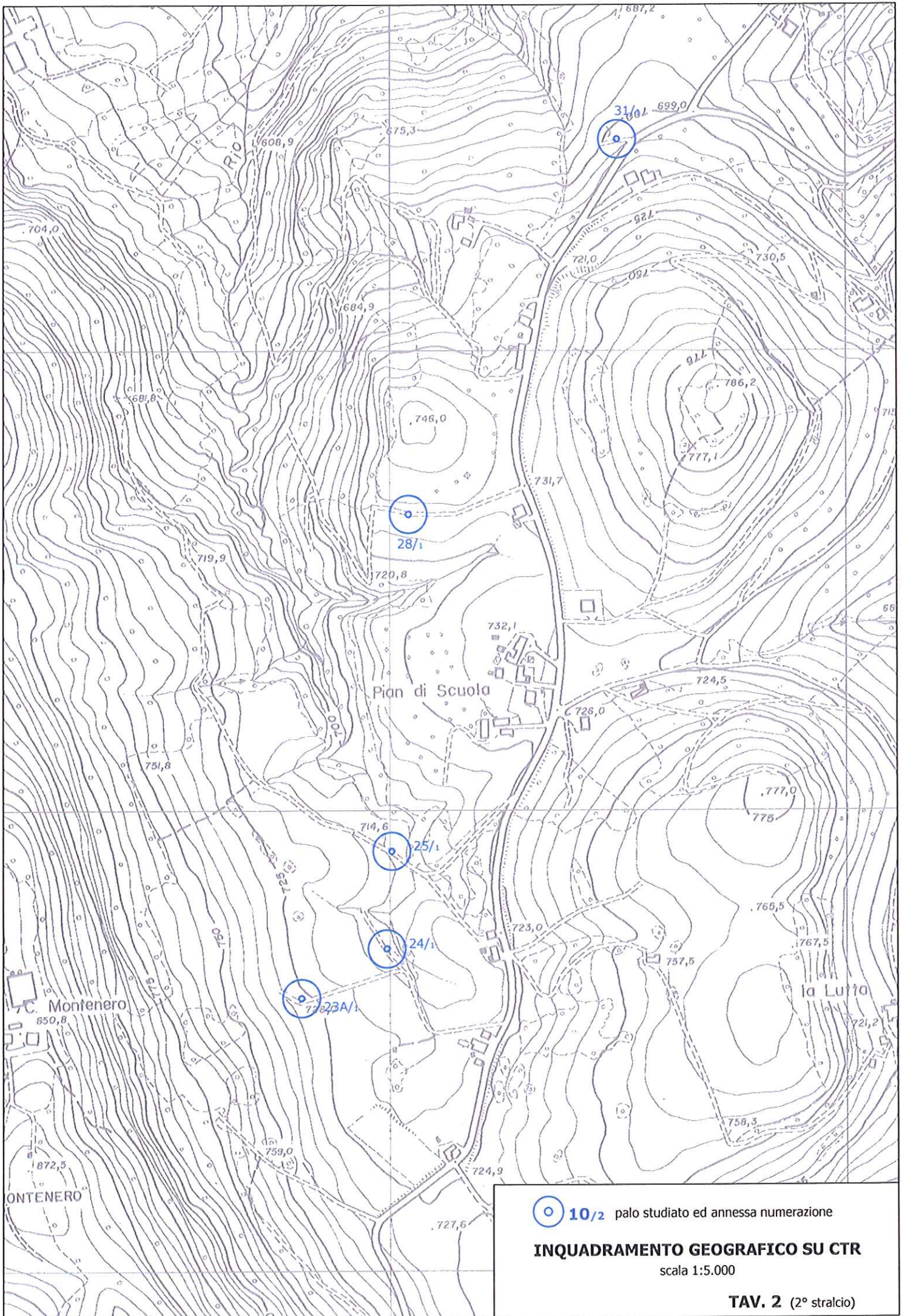



 10/2 palo studiato ed annessa numerazione

**INQUADRAMENTO GEOGRAFICO SU CTR**  
scala 1:5.000

**TAV. 2 (1° stralcio)**



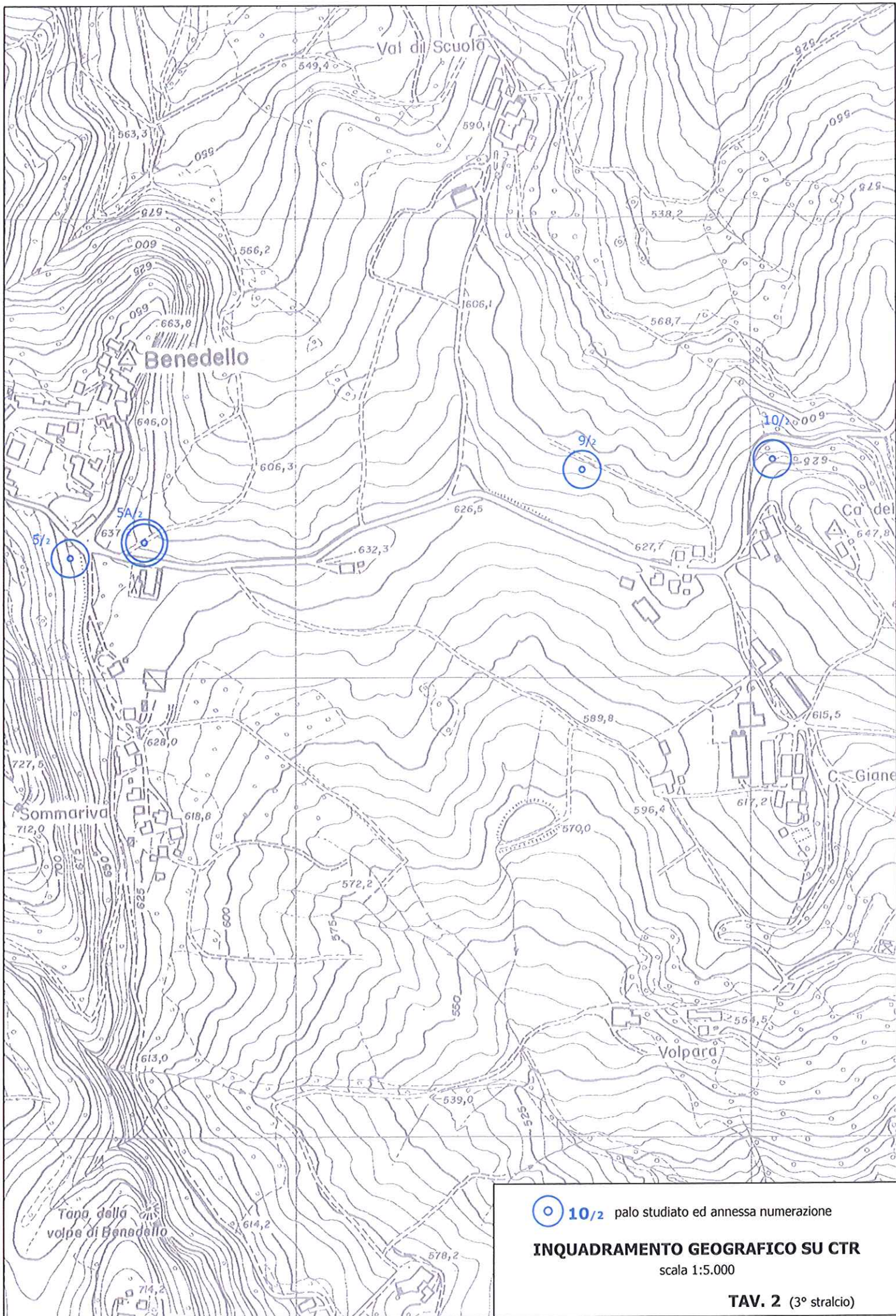



 10/2 palo studiato ed annessa numerazione

**INQUADRAMENTO GEOGRAFICO SU CTR**  
scala 1:5.000

**TAV. 2 (2° stralcio)**





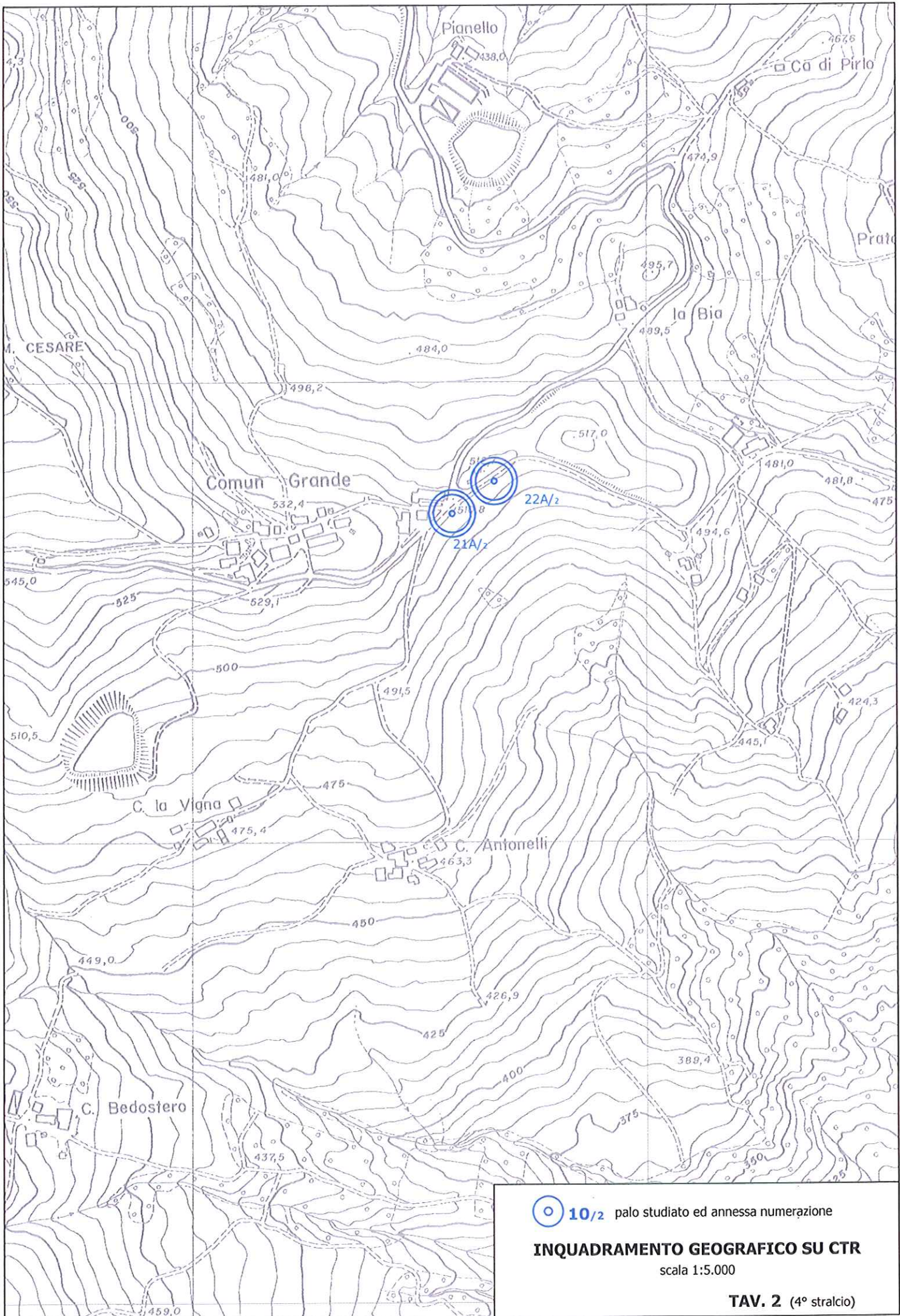
 10/2 palo studiato ed annessa numerazione


**INQUADRAMENTO GEOGRAFICO SU CTR**

scala 1:5.000

**TAV. 2** (3° stralcio)





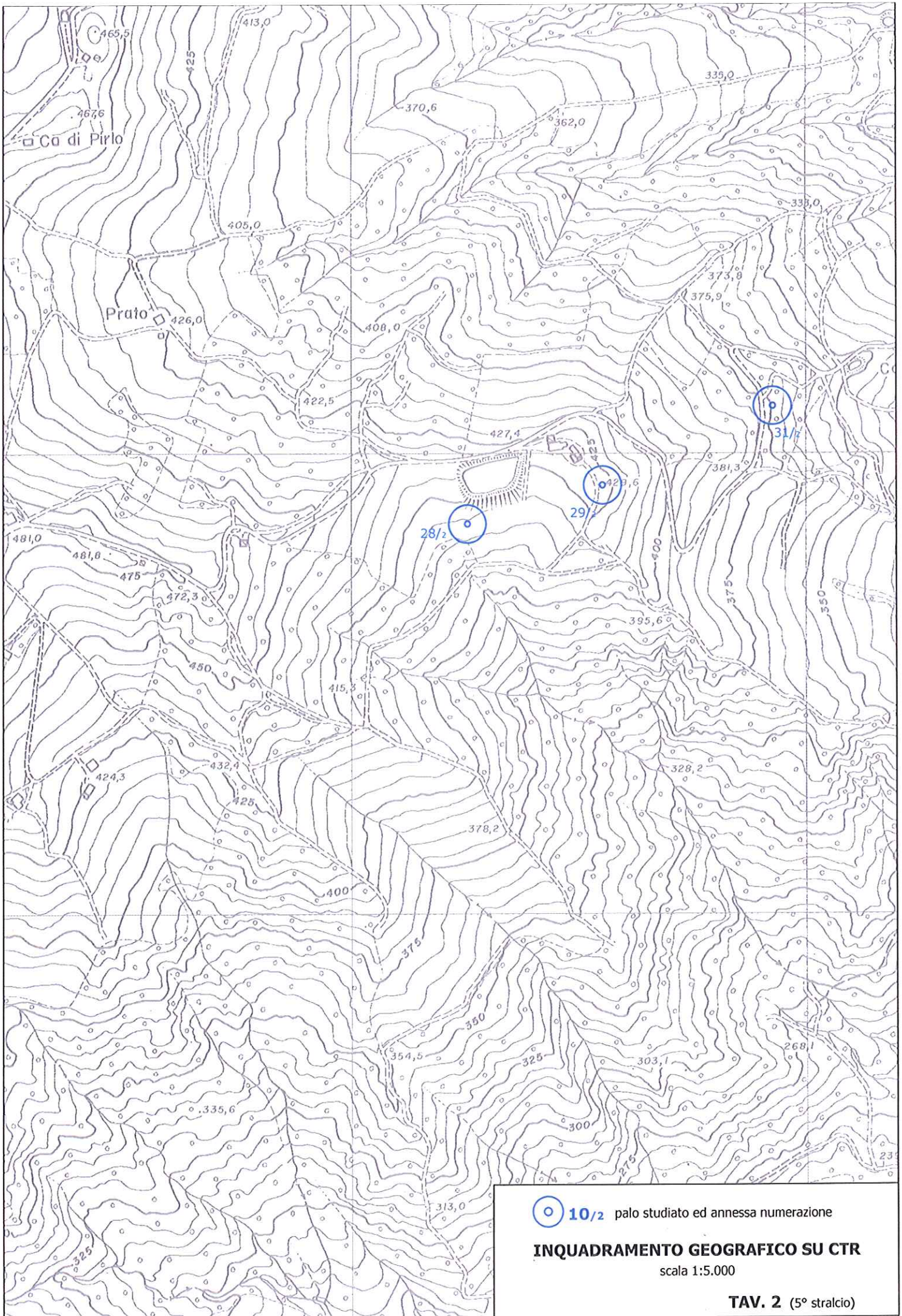
 10/2 palo studiato ed annessa numerazione

**INQUADRAMENTO GEOGRAFICO SU CTR**

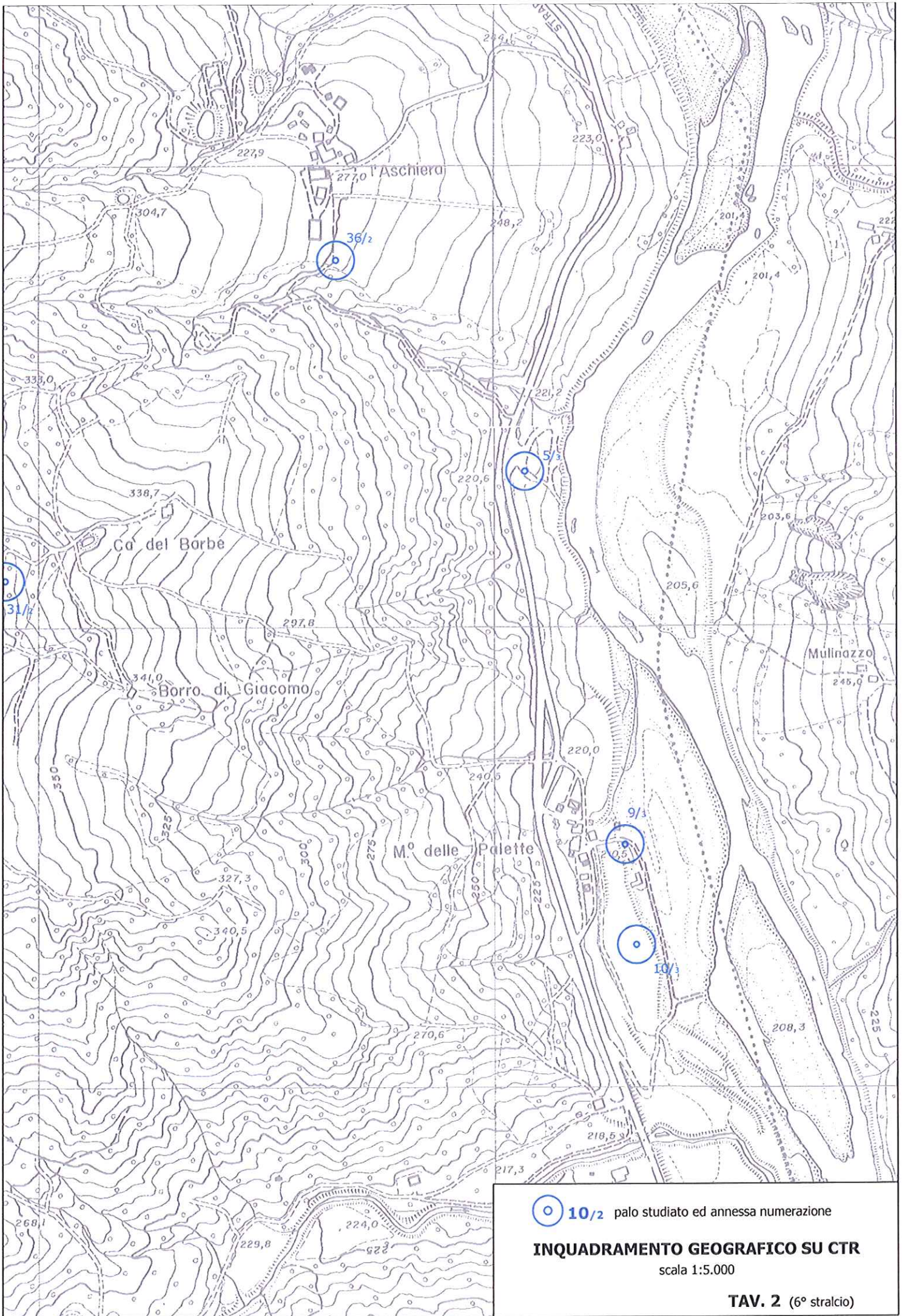
scala 1:5.000


**TAV. 2** (4° stralcio)









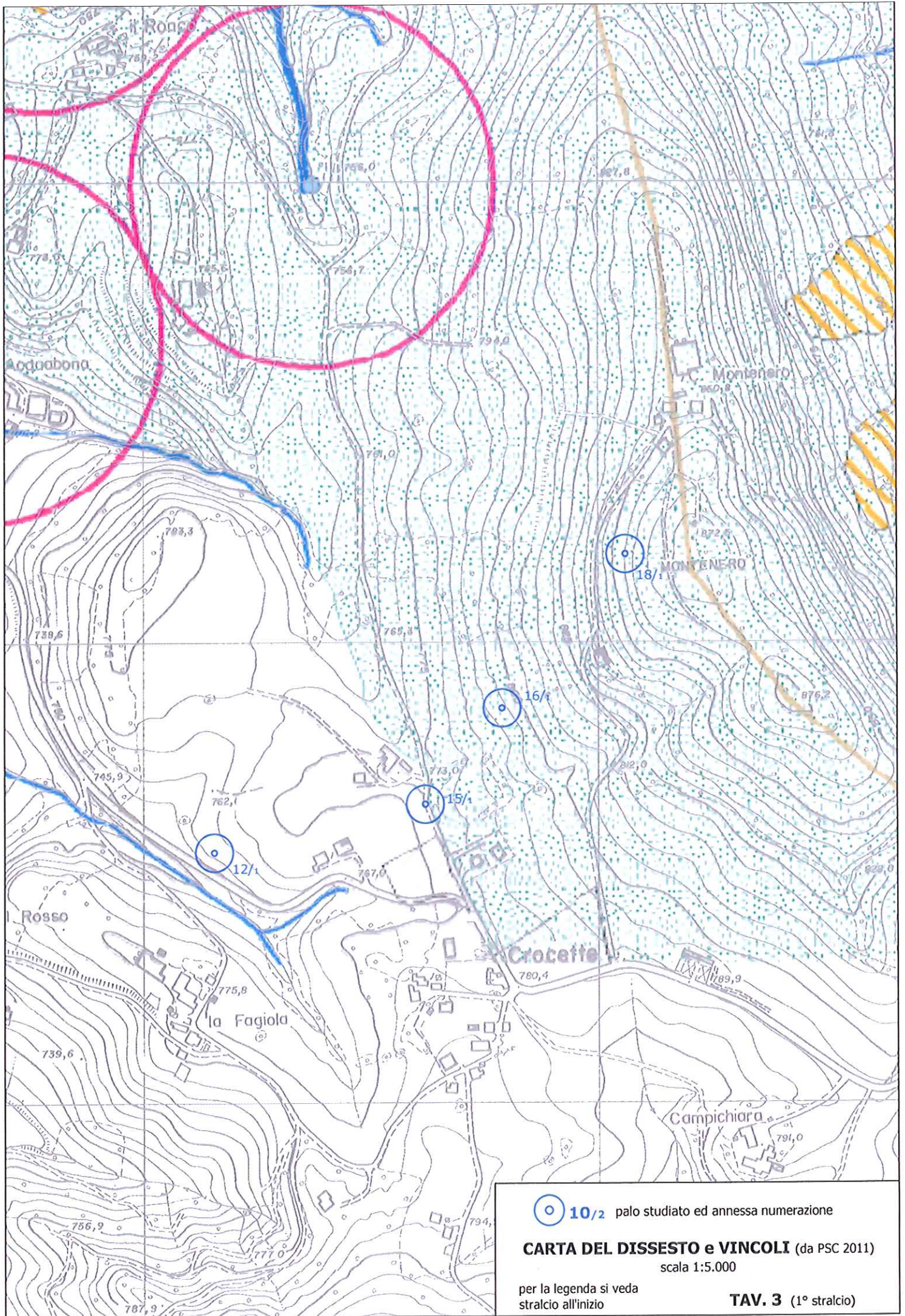
 10/2 palo studiato ed annessa numerazione


**INQUADRAMENTO GEOGRAFICO SU CTR**

scala 1:5.000

**TAV. 2** (6° stralcio)





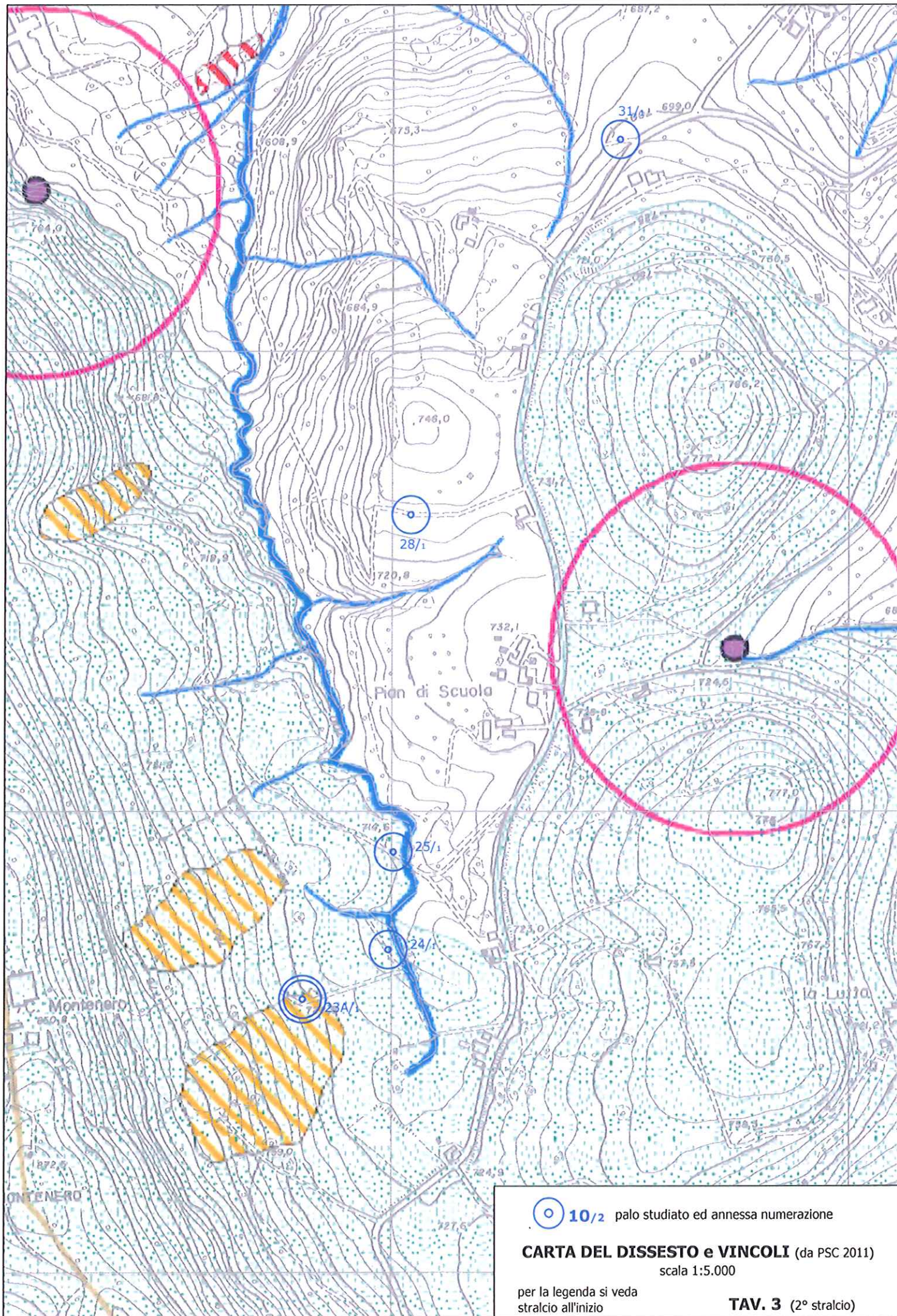
 **10/2** palo studiato ed annessa numerazione

**CARTA DEL DISSESTO e VINCOLI** (da PSC 2011)  
scala 1:5.000

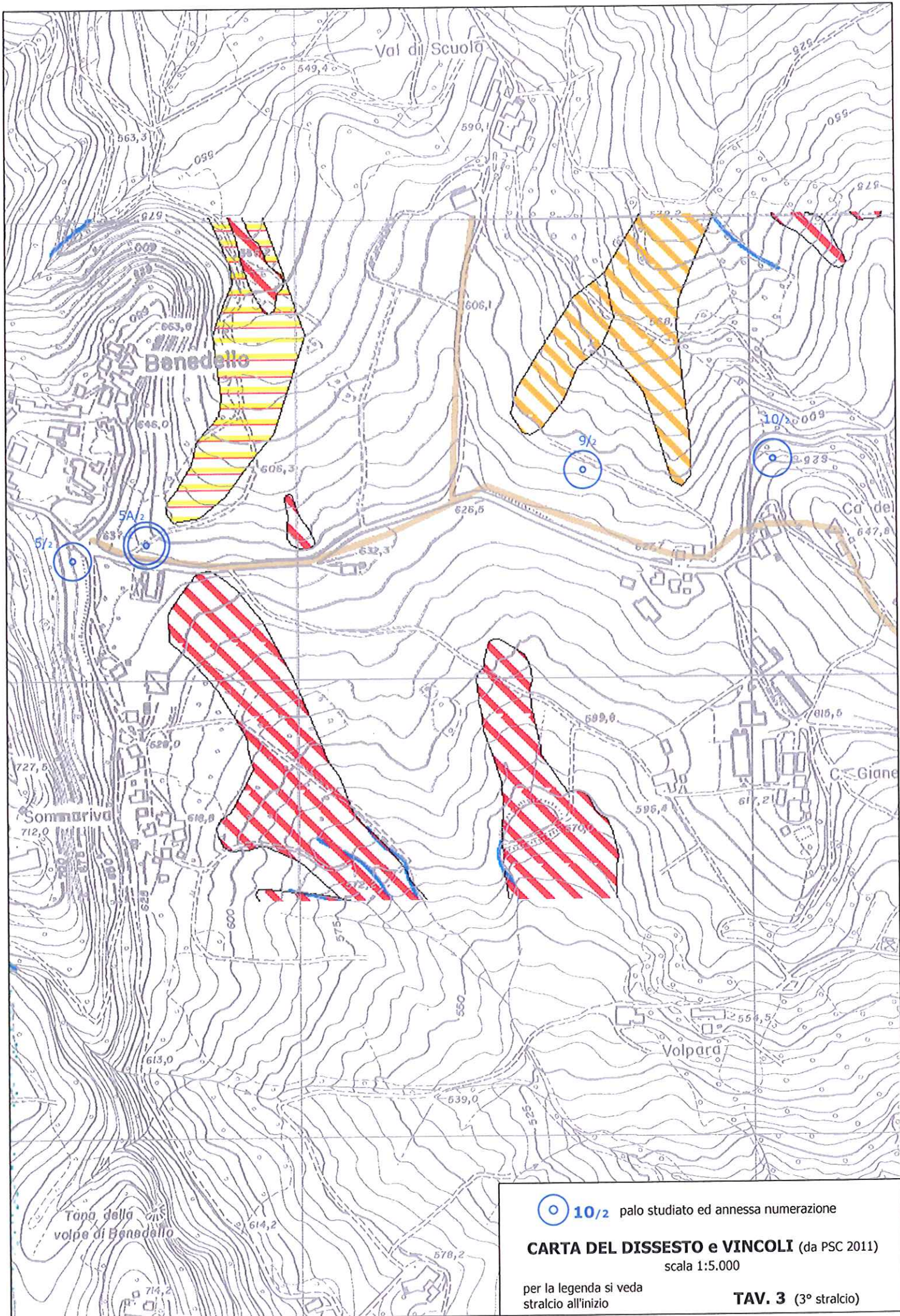
per la legenda si veda  
stralcio all'inizio


**TAV. 3** (1° stralcio)









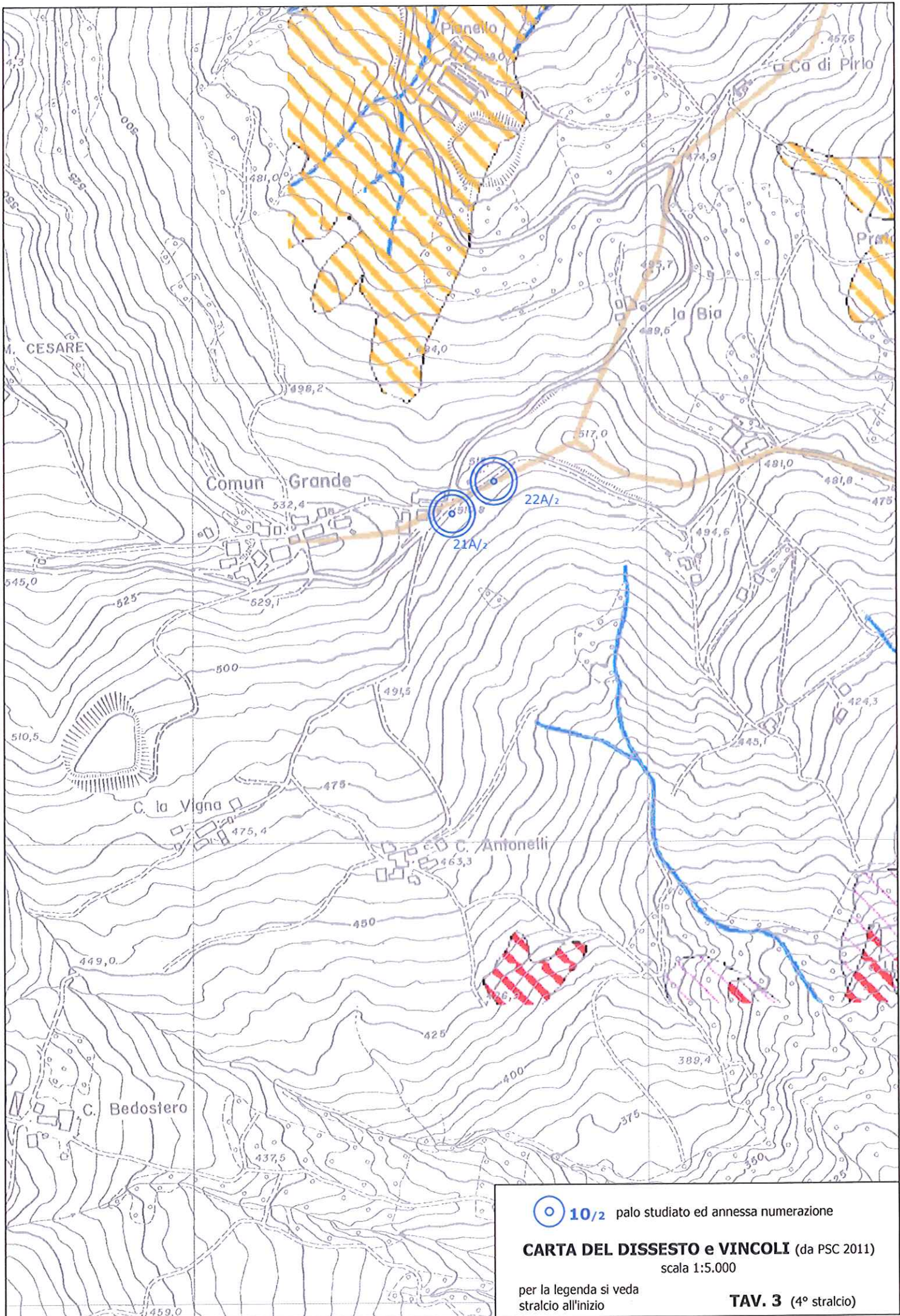
 **10/2** palo studiato ed annessa numerazione


**CARTA DEL DISSESTO e VINCOLI** (da PSC 2011)  
scala 1:5.000

per la legenda si veda  
stralcio all'inizio

**TAV. 3** (3° stralcio)





 10/2 palo studiato ed annessa numerazione

**CARTA DEL DISSESTO e VINCOLI** (da PSC 2011)  
scala 1:5.000

per la legenda si veda  
stralcio all'inizio

**TAV. 3** (4° stralcio)



