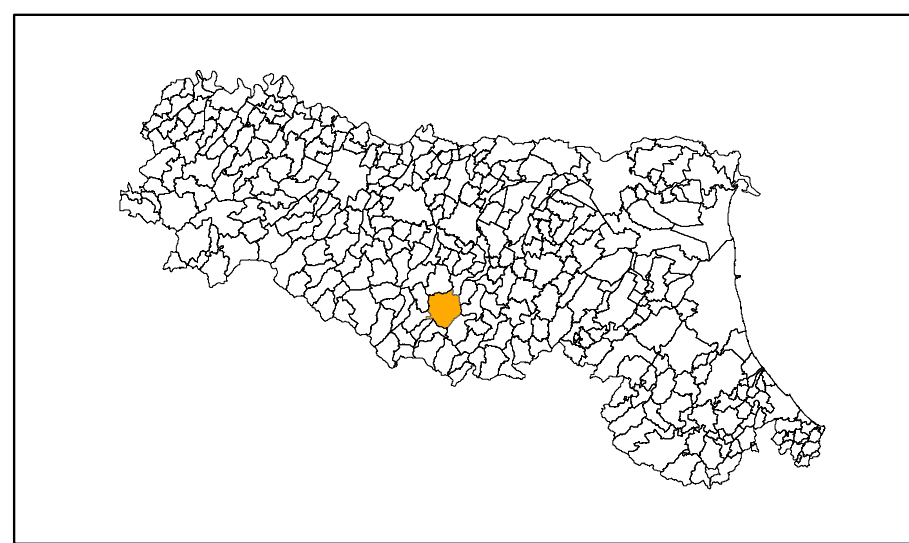


MICROZONAZIONE SISMICA

Carta delle VS




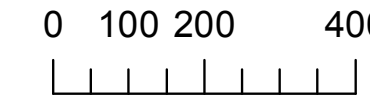
scala 1:10.000

Regione Emilia-Romagna
Comune di Pavullo nel Frignano



Regione	Soggetto realizzatore	Data
Emilia Romagna	Studio Geologia Tecnica Dott. Geol. Lorenzo Del Maschio	Ottobre 2013

Legenda

-  MASW
 -  Salti con approfondimenti di II livello
 -  Limite comunale
- 0 100 200 400 Metri
- 

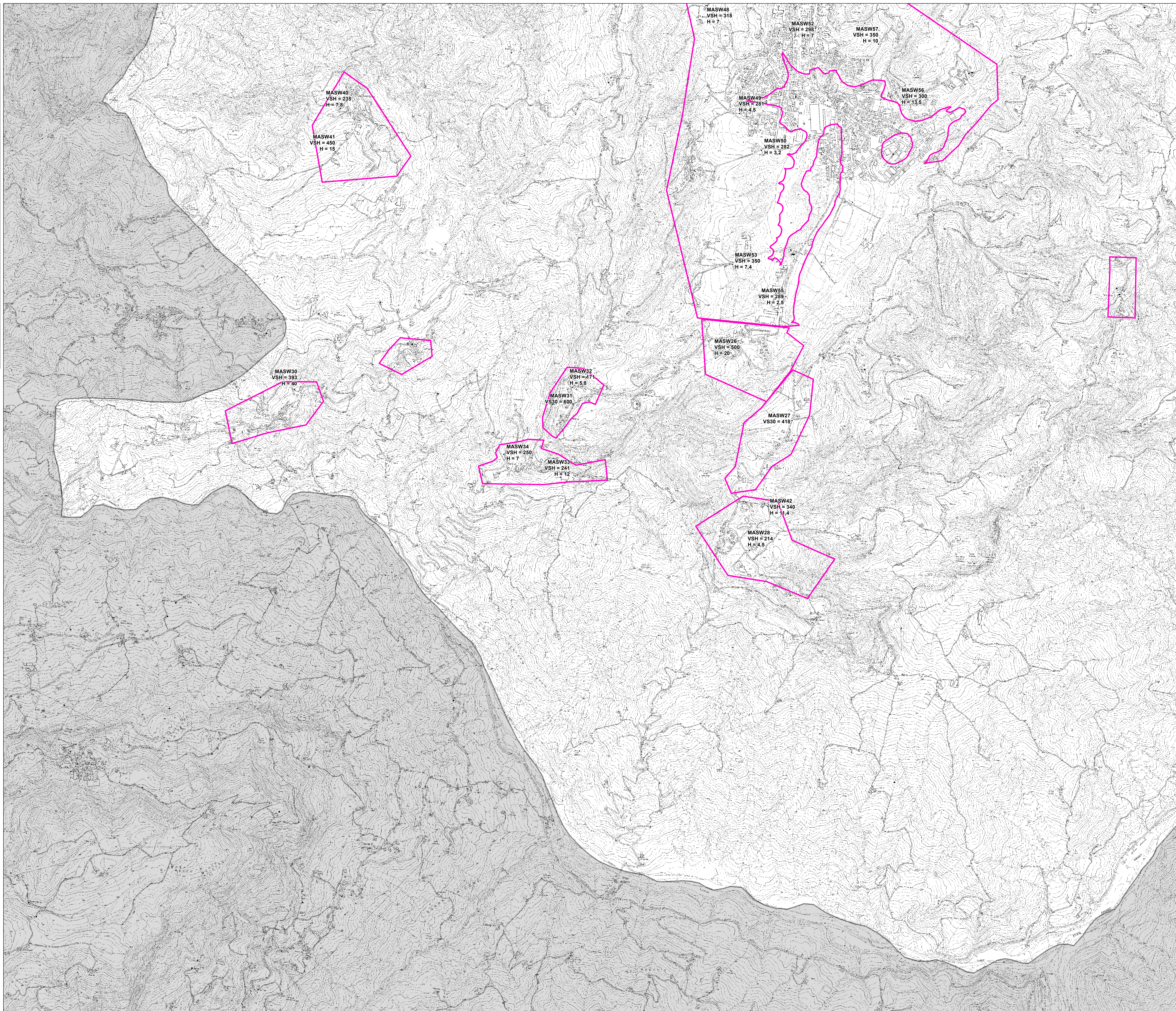


TAVOLA 4 DI 4

